



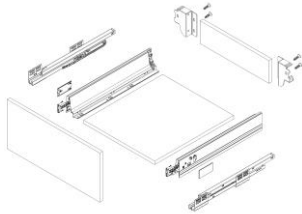
DTC - Drawer Box System

Product Features

- 83 mm height sides Lower Drawers
- 135 mm height sides Medium Drawers
- Full adjustment (left, right, up, down)
- Load capacity 40kg

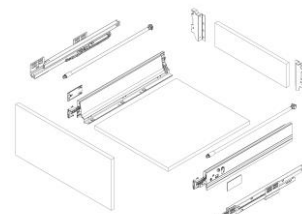
Lower Drawer Kit Includes

- One pair of Full Extension Soft-Close Slides
- One pair of Double Wall Drawer Slides (83mm)
- One pair of Cover Caps
- One pair of rear fixing brackets (83mm)
- Two universal drawer front connectors

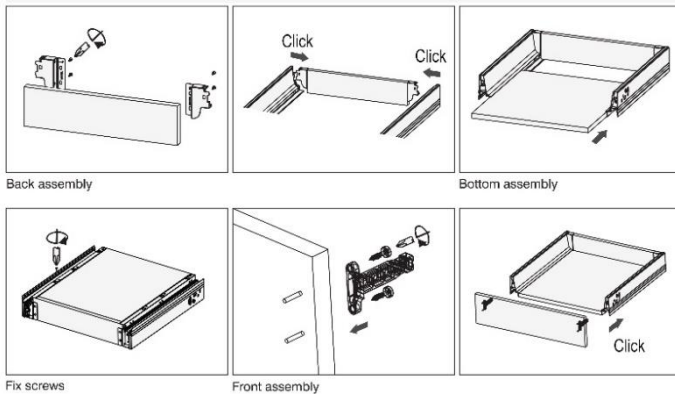


Medium Drawer Kit Includes

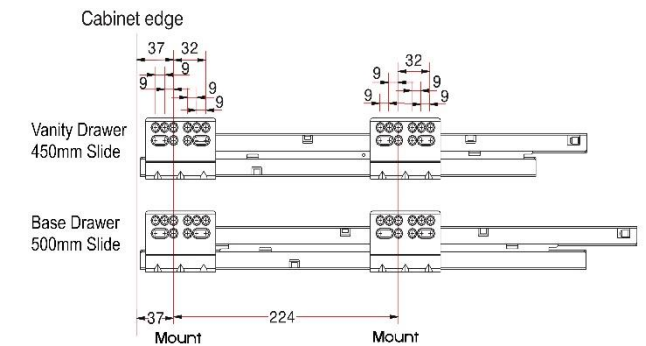
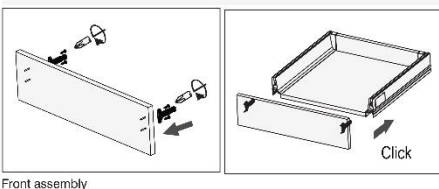
- One pair of Full Extension Soft-Close Slides
- One pair of Double Wall Drawer Slides (83mm)
- One pair of Cover Caps
- One pair of rear single rail fixing brackets (135mm)
- One pair of round lateral rails
- Two universal drawer front connectors



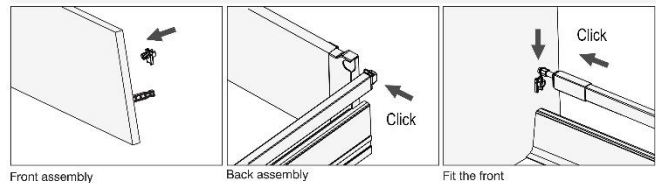
Installation Instruction



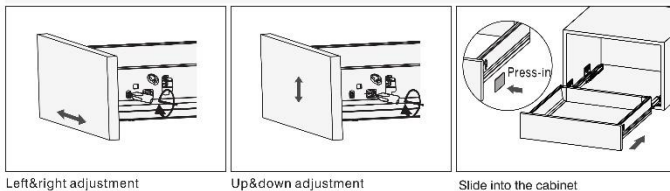
Lower drawer



Medium drawer



Adjustment



Removal

